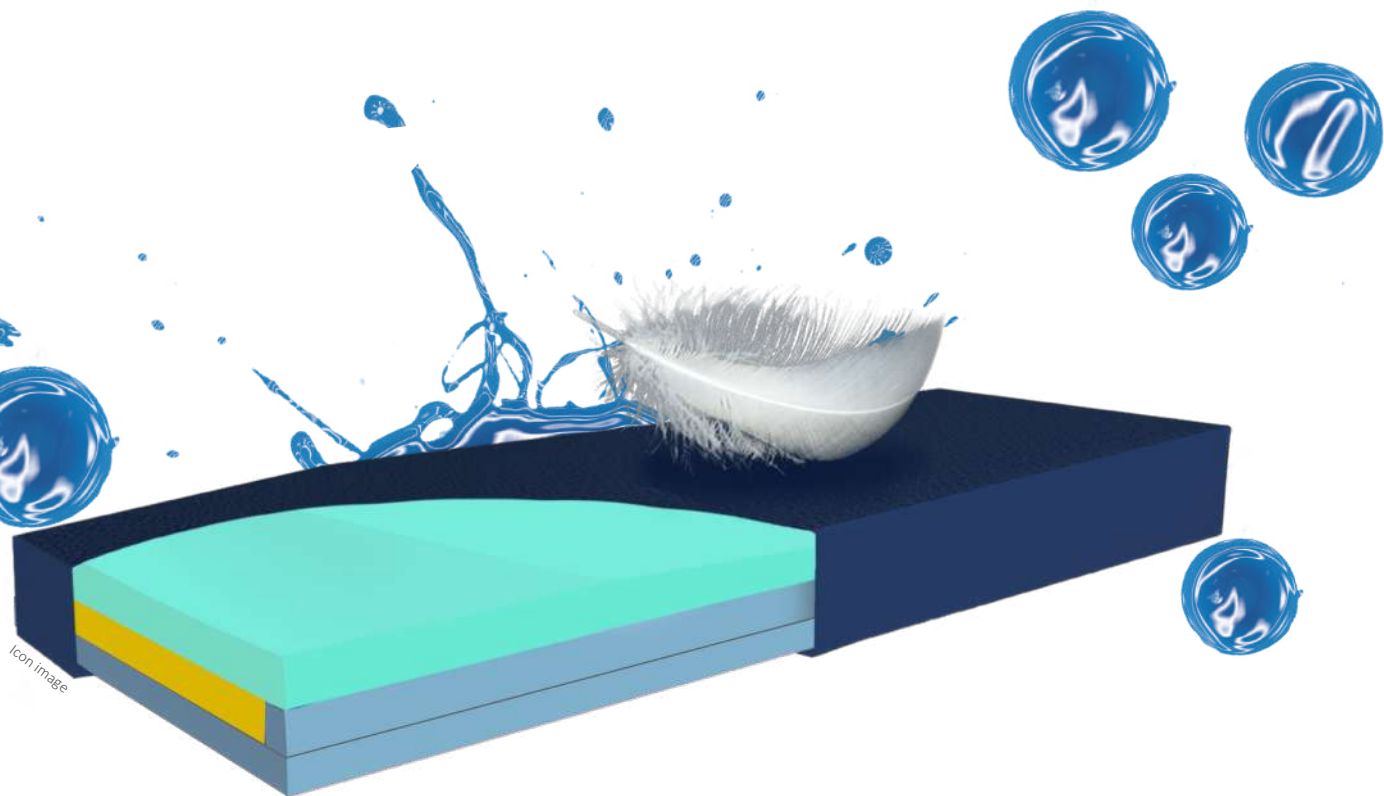


SYSTEMATIC HOMECARE



 **Hyper AIR<sup>®</sup> hybrid**  
- AIR-CELL MATTRESS -

Your retailer:

**PRS**   
Pressure Relieving Solutions

Autoclavable according to RKI\*<sup>1</sup> guidelines

Pain relief due to relieving positioning

Applicable up to stage 4 (EPUAP)

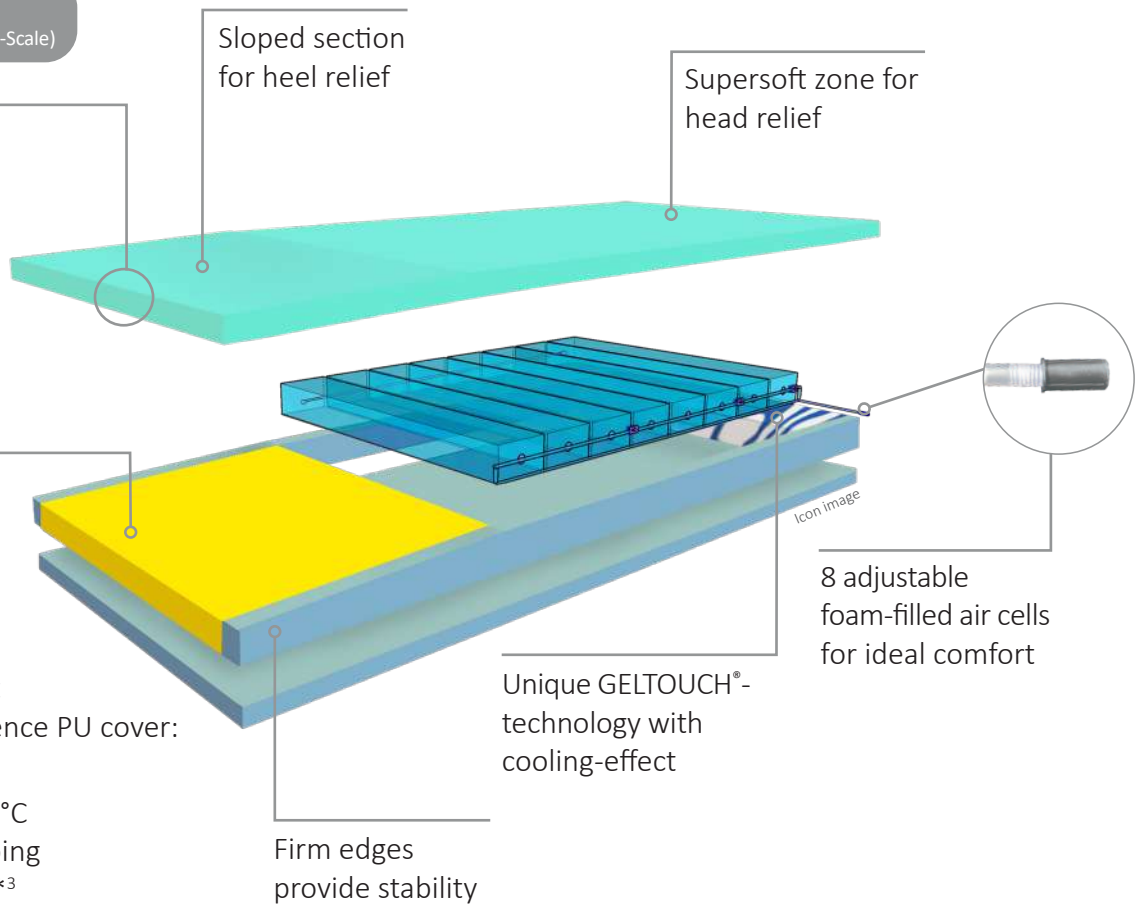
Very high risk (Norton-, Braden-, Waterlow-Scale)

# Hyper AIR<sup>®</sup> hybrid

Decubitus therapy air-cell mattress

**5 YEARS GUARANTEE**  
\*<sup>2</sup>

Top plate:  
ECOLAST<sup>®</sup> foam



With waterproof but breathable incontinence PU cover:

- Removable
- Washable up to 95°C
- Disinfection by wiping
- Disinfectant-proof\*<sup>3</sup>
- Suitable for disinfection with chlorine\*<sup>3</sup>
- Ultrasonically welded seams
- Zipper cover

**Size**

Height 16 cm  
Length See current price list  
Width See current price list

**GREENLINE<sup>®</sup>**

ECOLAST<sup>®</sup> Foam technology:

- Ensures longer durability
- Less CO<sub>2</sub> emission



Breathable open-cell GELTOUCH<sup>®</sup> foam + ECOLAST<sup>®</sup> foam + Visco foam



Autoclavable



Cover material virus- and bacteria-proof accord. ASTM 1670 + 1671



Waterproof but permeable to water vapour



Pressure < 18 mmHg



Bi-elastic cover to minimise shear forces



CE-marking MDR 2017/745



Maintenance-free



Flame retardant DIN EN 597 (I+II)



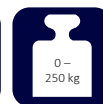
NO RISK  
No risk of failure due to self-inflating FOAM-IN-CELL-TECHNOLOGY



No electricity required



Max. 5000 ppm



Patient weight: 0 – 250 kg

\*<sup>1</sup> Robert-Koch-Institute (RKI) is a part of the Federal Ministry of Health in Germany. It is responsible for disease prevention and control.

\*<sup>2</sup> Guarantee applies to functional properties of the mattress core (pro rata basis)!

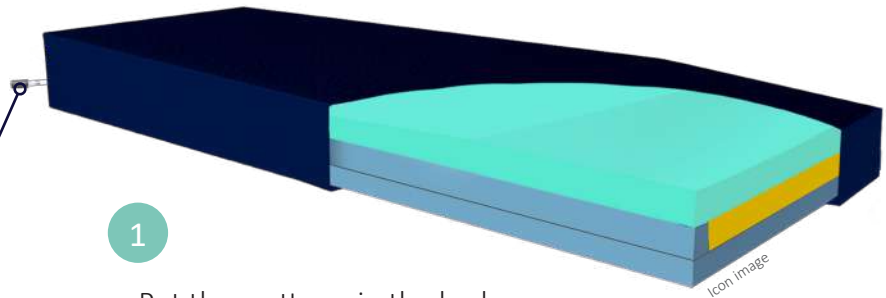
\*<sup>3</sup> For more details see instructions for use.

# Hyper AIR<sup>®</sup> hybrid

- AIR-CELL MATTRESS -

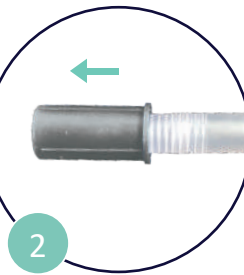
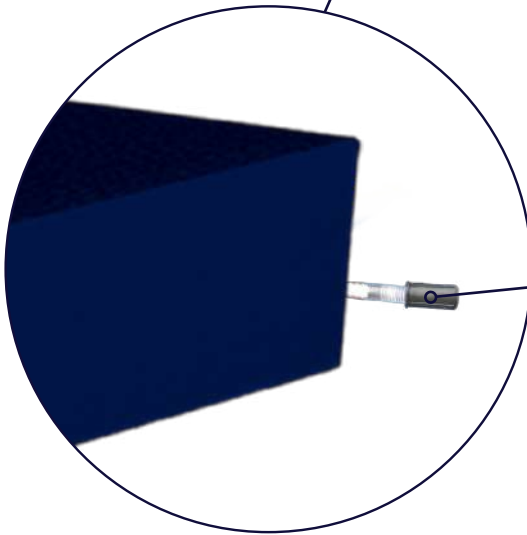


WATCH NOW  
on YouTube!



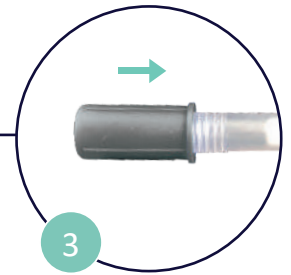
1

Put the mattress in the bed.  
Please note the imprint on the top  
of the mattress „THIS SIDE UP“.



2

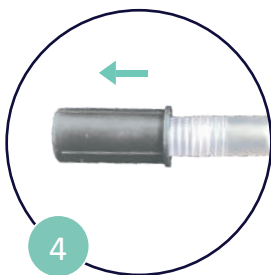
Open the valve by pulling and wait  
approx. 5 minutes, until the air-cells  
have inflated automatically.



3

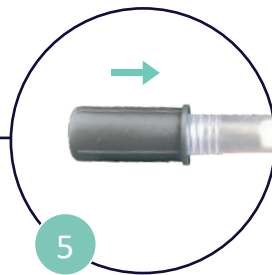
Close the valve  
by pressing.

*(Valve lock cannot fall off)*



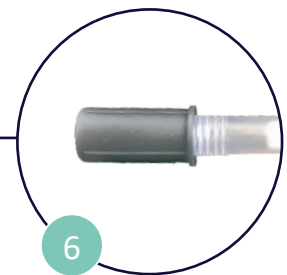
4

Place the patient on the mattress.  
Carefully open the valve by pulling the  
grey cap, so that air escapes and carry  
out a fingertest\* at the same time.



5

Close the valve by  
pressing.



6

Daily checking of the correct filling  
of the air-cells is recommended.  
An adjustment may be necessary.

\*Place hand between buttocks and mattress.  
Optimal lying comfort is achieved when  
only a slight finger movement of 1 – 2,5 cm  
is possible.